

# D1000x900 NAVIGATOR®

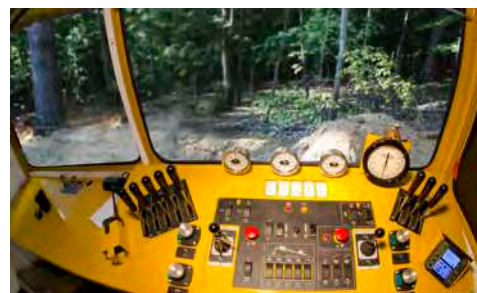
## HORIZONTAL DIRECTIONAL DRILL



**DURABLE HYDRAULIC CIRCUIT.** Independent hydraulic circuits are an important factor in limiting contamination to the affected circuit and its respective components.



**STAY PRODUCTIVE.** Stay productive and efficient due to a hydraulic motor design which allows for full torque and rotary rpm simultaneously.



**WORK IN COMFORT.** Operator console designed for comfort and large windows for exceptional visibility.



**MASTER YOUR TERRAIN.** Conquer difficult ground conditions with a high-torque design.



**BY YOUR SIDE.** Our Parts Center has drive motors, rotation motors, gear boxes, pumps, valves, coolers and many other major components in stock and ready for delivery.



**STAY ON SCHEDULE.** A floating vise allows the breakout system to clamp the rod fully during breakout, helping to prevent rod wrap and keep your crew on schedule.

# D1000x900 NAVIGATOR® HORIZONTAL DIRECTIONAL DRILL

## DRILL RACK

Min transport length: 50.3' (15.3 m)

Width: 8.5' (2.6 m)

Min transport height: 11.5' (3.5 m)

Weight: 95,600 lb (43,363.4 kg)

Suspension: Triple axle with air ride suspension

Front base anchor length: 20' (6.1 m)

Front base anchor width: 6' (1.8 m)

Front base anchor height: 38.4" (97.5 cm)

Front small anchor length: 10.5' (3.2 m)

Front small anchor width: 5.5' (1.7 m)

Front small anchor height: 22.8" (57.9 cm)

Rear base anchor length: 16' (4.9 m)

Rear base anchor width: 7.8' (2.4 m)

Rear base anchor height: 15.6" (39.6 cm)

Drill rack angle: 10° - 15° (17.5% - 26.2%)

## DRILLER'S CABIN

Length: 11.6' (3.5 m)

Width: 7.9' (2.4 m)

Height: 8' (2.4 m)

Weight: 7800 lb (3538 kg)

Heat and air conditioning: 3 ton (10.6 kW) in-wall combination unit

## POWER PACK

Make and model: (1) CAT C-27 ACERT

Fuel type: Diesel

Fuel capacity: 500 gal (1892.7 L)

Hydraulic tank capacity: 720 gal (2725.5 L)

Max engine rpm: 2000 rpm

Gross horsepower: 800 hp (597 kW)

EPA certification family: Tier 3 (EU Stage IIIA)

## POWER PACK OPTION TWO

Make and model: (2) CAT C-18 ACERT

Fuel type: Diesel

Fuel capacity: 1000 gal (3785.4 L)

Hydraulic tank capacity: 720 gal (2725.5 L)

Max engine rpm: 2000 rpm

Gross horsepower: 1200 hp (895 kW)

EPA certification family: Tier 3 (EU Stage IIIA) or Tier 4 Final (EU Stage IV)

## POWER PACK OPTION THREE

Make and model: (2) CAT C-27 ACERT

Fuel type: Diesel

Fuel capacity: 1000 gal (3785.4 L)

Hydraulic tank capacity: 720 gal (2725.5 L)

Max engine rpm: 2000 rpm

Gross horsepower: 1600 hp (1193 kW)

EPA certification family: Tier 3 (EU Stage IIIA)

## OPERATIONAL

Thrust/Pullback: 985,100 lb (4,381.9 kN)

Max spindle torque: 99,400 ft-lb (134,768.3 Nm)

Max spindle speed at max engine rpm (with PS800): 38 rpm

Max spindle speed at max engine rpm (with PS1200/PS1600): 57 rpm

Max carriage speed at max engine rpm: 71 fpm (21.6 m/min)

Number of rotation motors: 1

Number of drive motors: 4

Mud swivel: 3" (7.6 cm)

## LOWER BREAKOUT VISE

Breakout torque: 147,500 ft-lb (199,983.1 Nm)

Configuration: 3-jaw clamp, 8" (20.3 cm)

Weight: 3800 lb (1723.7 kg)

Travel: 6' (1.8 m)

Inside diameter: 10" (25.3 cm)

## UPPER BREAKOUT VISE

Clamp force: 176,000 lb (782.8 kN)

Configuration: 2-jaw clamp

Inside diameter: 10" (25.4 cm)

## SAFETY

Remote lockout: Yes

Strike alert: Yes

Vermeer Corporation reserves the right to make changes in engineering, design and specifications; add improvements; or discontinue manufacturing at any time without notice or obligation.

Equipment shown is for illustrative purposes only and may display optional accessories or components. Please contact your local Vermeer dealer for more information on machine specifications.

Vermeer, the Vermeer logo, Equipped to Do More and Navigator are trademarks of Vermeer Manufacturing Company in the U.S. and/or other countries. CAT and ACERT are trademarks of Caterpillar Inc.

© 2015 Vermeer Corporation. All Rights Reserved. Printed in the U.S.A. Please recycle.

